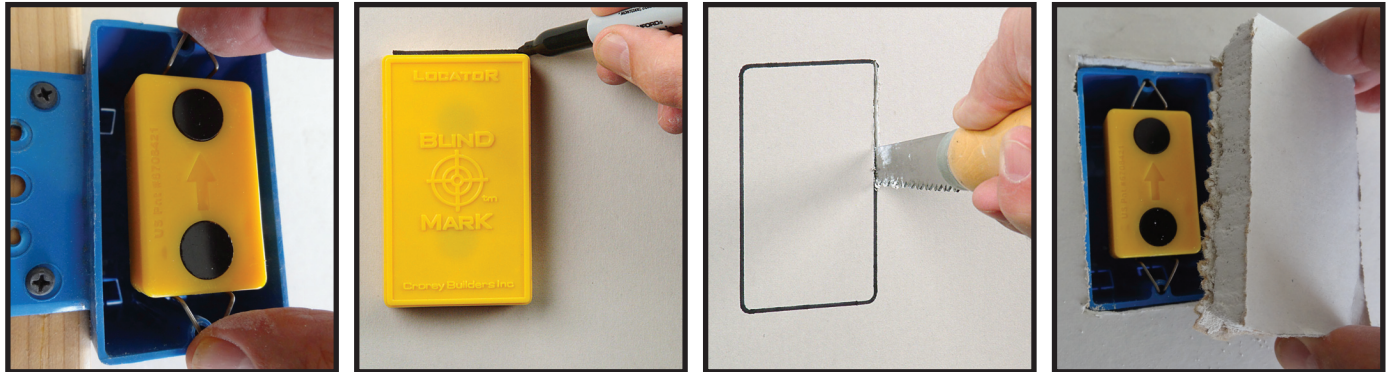


Blind Mark Comparison Sheet

What exactly are these products and how do they work?

They all work the same way and they all consist of Target magnets and a Locator magnet. You put the Target magnet(s) in an electrical outlet receptacle, then hang the drywall. You put the Locator magnet near where you think the receptacle is and it will **SNAP!** precisely into place. Then mark around the locator and cut out the drywall.



Which Blind Mark product do I need?



The original **Blind Mark XT** is used for locating single-gang or multi-gang rectangular outlet boxes.



The **Center Mark** used for locating recessed lighting fixtures (cans).



composite, rectangle, round, octagon, multi-gang, single-gang, standard, or thin.

The **Multi Mark** can be used for practically all electrical boxes: metal, plastic,



What is the **Plug Mark** and what is it used for?

The **Plug Mark** is an accessory for the Blind Mark that is used for finding electrical receptacles that have already been installed.

Each kit includes two target magnets that you plug into receptacles before hanging new drywall.

What exactly are “rare earth magnets”? Rare earth magnets are strong, permanent magnets (unlike ferrite or alnico magnets which can lose their magnetic strength).

What do you mean when you say it’s “twice as easy”? You only have to lift the drywall into place once. With other “marking” tools you have to lift the drywall once to mark it and again to install it.

Can I use Blind Mark products for building materials other than drywall? Yes, they work on drywall, plywood, particle board, laminated flooring, Masonite, exterior siding, cement board, tile backsplashes, slate and more.